

**VIRGINIA STATE POLICE
Help Eliminate Auto Theft
(H.E.A.T.)
Program**



**Analysis of 2007
Virginia Motor Vehicle Theft Statistics**

Prepared by



Neathawk Dubuque & Packett

TABLE OF CONTENTS

		Page			Page
Highlights		2	Location by Type of Jurisdiction		23
Virginia Thefts		4	Location by VSP Division		25
Virginia Theft Rate		6	Division 1		28
National Theft Rate		9	Division 2		31
Crime Index Offenses		11	Division 3		33
Clearance Rate		12	Division 4		35
Seasonality		13	Division 5		37
Age of Offenders		16	Division 6		40
Value		20	Division 7		43

HIGHLIGHTS

August was the leading month for auto theft in Virginia in 2007, followed by January and June. On average for the past five years, the greatest number of thefts occurred in the five-month period from June through October, with 45% of reported thefts during this time.



Motor Vehicle Theft in Virginia increased from 15,022 offenses in 1987 to 21,284 offenses in 1991, a 42% increase. Since H.E.A.T. began in 1992, Motor Vehicle Thefts have decreased by close to 34% compared to the base year of 1991.

Young people continue to make up a large portion of the arrests for Motor Vehicle Theft, with close to 42% of those arrested in 2007 residing in the 20 years old or younger age group.



The five year average (2003-2007) value of reported Motor Vehicle Thefts each year in Virginia is \$99,523,705. The five year average value per incident is \$6,275.

In 2007, three areas of the state account for 76% of the reported Motor Vehicle Thefts in Virginia: Tidewater - 30%; Northern Virginia - 23%; and Richmond - 23%.



Prior to 1999, crimes in Virginia were reported using the Summary System, which counts only the highest crime in an incident. In 1999, two methods were in place: the Summary System; and the Incident Based System (IBR), which counts all offenses in an incident, to a maximum of ten.

Beginning in 2000 and going forward, all information included in the *Crime in Virginia* reports are IBR data. Because of the change to the IBR System, it is impossible to compare some information to previous data. In some cases, 1999 data have been omitted from comparisons.

For more information and a further discussion of the two reporting systems, see the 1999 and 2000 editions of *Crime in Virginia*, which were compiled by the Uniform Crime Reporting Section of the Virginia Department of State Police.

The primary source for information in this analysis are the 1975 through 2007 editions of *Crime in Virginia*.

INCIDENCE - VIRGINIA MOTOR VEHICLE THEFT

Year	1975	1976	1977	1978	1979	1980	1981	1982	1983	1984	1985	1986
Number Thefts	13,449	11,330	11,623	11,776	12,792	12,111	10,956	10,100	9,861	10,337	11,226	12,702
Increase/Decrease												
Year-to-Year		-15.76%	2.59%	1.32%	8.63%	-5.32%	-9.54%	-7.81%	-2.37%	4.83%	8.60%	13.15%

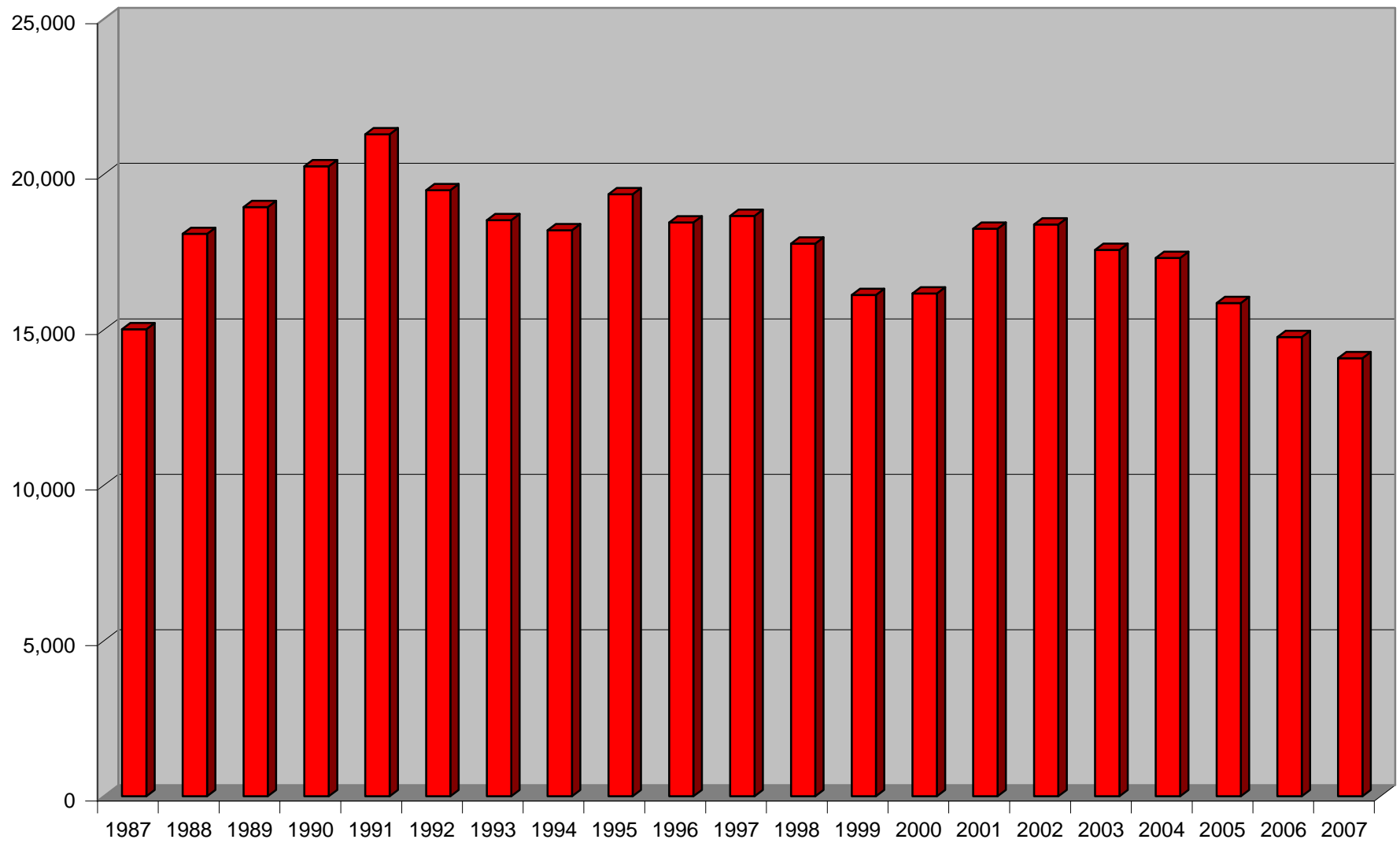
Year	1987	1988	1989	1990	1991	1992	1993	1994	1995	1996
Number Thefts	15,022	18,084	18,951	20,263	21,284	19,488	18,533	18,205	19,366	18,454
Increase/Decrease										
Year-to-Year	18.26%	20.38%	4.79%	6.92%	5.04%	-8.44%	-4.90%	-1.77%	6.38%	-4.71%
Since 1991						-8.44%	-12.93%	-14.47%	-9.01%	-13.30%

	1997	1998	1999	2000	2001	2002	2003	2004	2005	2006	2007
Number Thefts	18,663	17,769	16,120	16,172	18,257	18,388	17,566	17,309	15,864	14,765	14,087
Increase/Decrease											
Year-to-Year	1.13%	-4.79%	-9.28%	0.32%	12.89%	0.72%	-4.47%	-1.46%	-8.35%	-6.93%	-4.59%
Since 1991	-12.31%	-16.51%	-24.26%	-24.02%	-14.22%	-13.61%	-17.47%	-18.68%	-25.47%	-30.63%	-33.81%

In the five years preceding the establishment of the Virginia State Police Help Eliminate Auto Theft (H.E.A.T.) Program, Motor Vehicle Theft in Virginia increased from 15,022 offenses in 1987 to 21,284 offenses in 1991, a 42% increase. Since H.E.A.T. began in 1992, Motor Vehicle Thefts have decreased 33.81% as compared to the base year of 1991. Motor Vehicle Thefts have decreased in 11 of the 16 years the H.E.A.T. Program has been in existence, and thefts have never risen above the peak year of 1991 or the previous year.

In 2007, there were 14,087 reported thefts, a decrease from the previous year of 678 thefts (4.59%).

Virginia Motor Vehicle Thefts



VIRGINIA VEHICLE THEFT RATE (Number of Thefts per 100,000 residents)

Year	Population	Vehicle Theft	Vehicle Theft Rate	% Inc (Dec)	% Inc (Dec) Since 1991
1975	5,056,000	13,149	260.1	-15.81%	
1976	5,132,500	11,330	220.8	-15.12%	
1977	5,205,400	11,623	223.3	1.15%	
1978	5,284,500	11,776	222.8	-0.20%	
1979	5,324,400	12,792	240.3	7.81%	
1980	5,346,818	12,111	226.5	-5.72%	
1981	5,444,100	10,956	201.2	-11.15%	
1982	5,492,800	10,100	183.9	-8.63%	
1983	5,564,700	9,861	177.2	-3.63%	
1984	5,643,900	10,337	183.2	3.36%	
1985	5,715,100	11,226	196.4	7.25%	
1986	5,811,700	12,702	218.6	11.27%	
1987	5,932,300	15,022	253.2	15.83%	
1988	6,036,900	18,084	299.6	18.30%	
1989	6,120,200	18,951	309.6	3.37%	
1990	6,187,358	20,263	327.5	5.76%	
1991	6,288,000	21,284	338.5	3.36%	
1992	6,394,500	19,488	304.8	-9.96%	-9.96%
1993	6,473,000	18,533	286.3	-6.05%	-15.41%
1994	6,551,400	18,205	277.9	-2.95%	-17.91%
1995	6,617,400	19,366	292.7	5.32%	-13.54%
1996	6,666,200	18,454	276.8	-5.41%	-18.22%
1997	6,737,500	18,663	277.0	0.06%	-18.16%
1998	6,789,200	17,769	261.7	-5.52%	-22.68%
1999	6,872,900	16,120	234.5	-10.39%	-30.71%
2000	7,078,515	16,172	228.5	-2.59%	-32.50%

Analysis of 2007 Virginia Motor Vehicle Theft Statistics

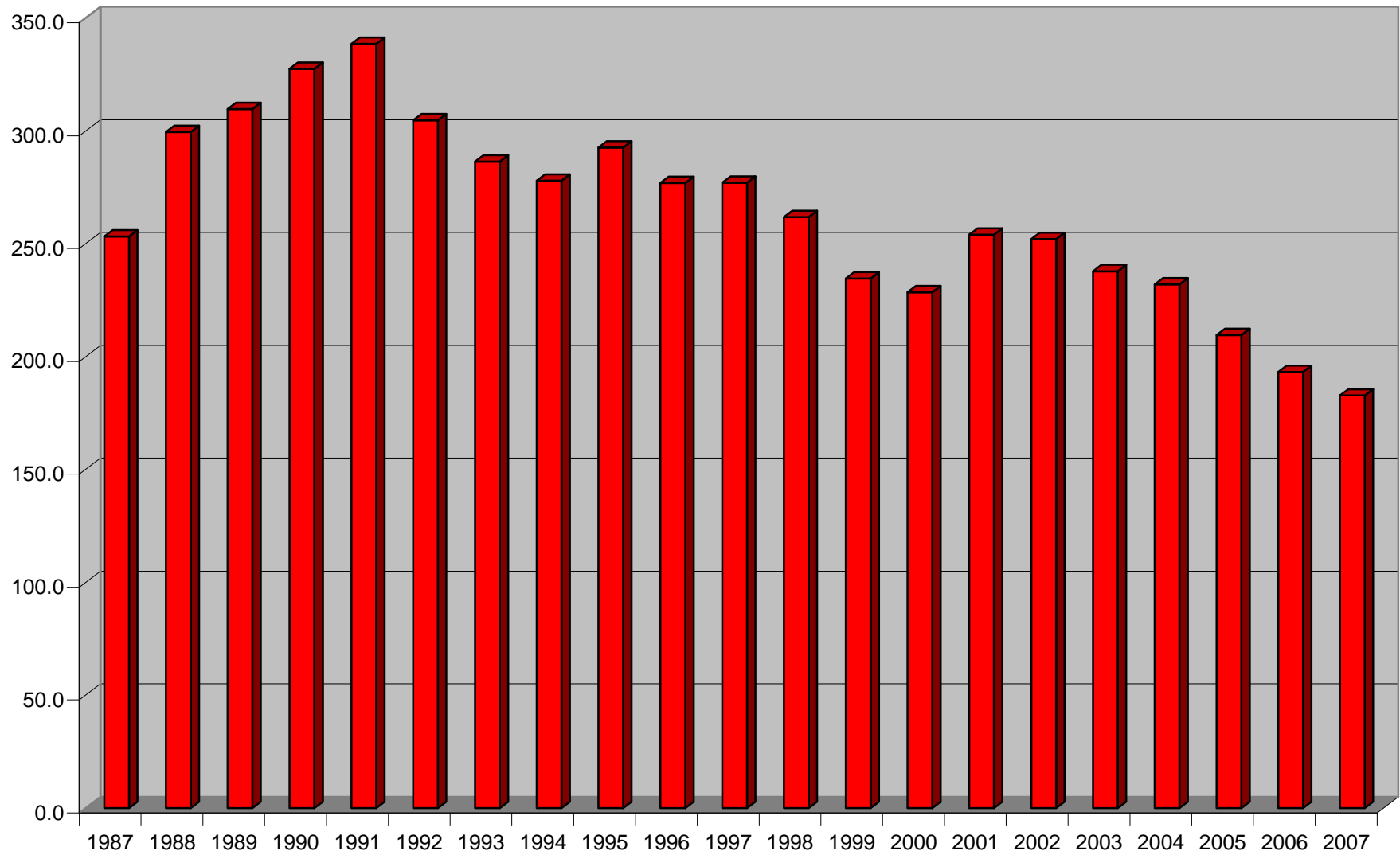
Year	Population	Vehicle Theft	Vehicle Theft Rate	% Inc (Dec)	% Inc (Dec) Since 1991
2001	7,187,734	18,257	254.0	11.18%	-24.96%
2002	7,293,542	18,388	252.1	-0.74%	-25.52%
2003	7,386,300	17,566	237.8	-5.67%	-29.74%
2004	7,459,827	17,309	232.0	-2.43%	-31.45%
2005	7,567,465	15,864	209.6	-9.65%	-38.07%
2006	7,642,884	14,765	193.2	-7.85%	-42.93%
2007	7,712,091	14,087	182.7	-5.45%	-46.04%

The Motor Vehicle Theft Rate (number of thefts per 100,000 residents) in Virginia increased from 253.2 in 1987 to 338.5 in 1991, a 34% increase. Since H.E.A.T. began in 1992, the Motor Vehicle Theft rate has decreased 46.04% as compared to the base year of 1991. The rate has decreased in 13 of the 16 years the H.E.A.T. Program has been in existence and has never risen above the peak year of 1991 or the two previous years.

In 2006, for the first time in 21 years, the theft rate dropped below 200. In 1985, the theft rate was 196.4, which increased to 218.6 in 1986. The 2007 rate, at 182.7, is the lowest rate since 1975, except for 1983 when the rate was 177.2.

Source for Virginia population figures: <http://www.ers.usda.gov/stateFacts/VA.htm>.

Virginia Motor Vehicle Theft Rate



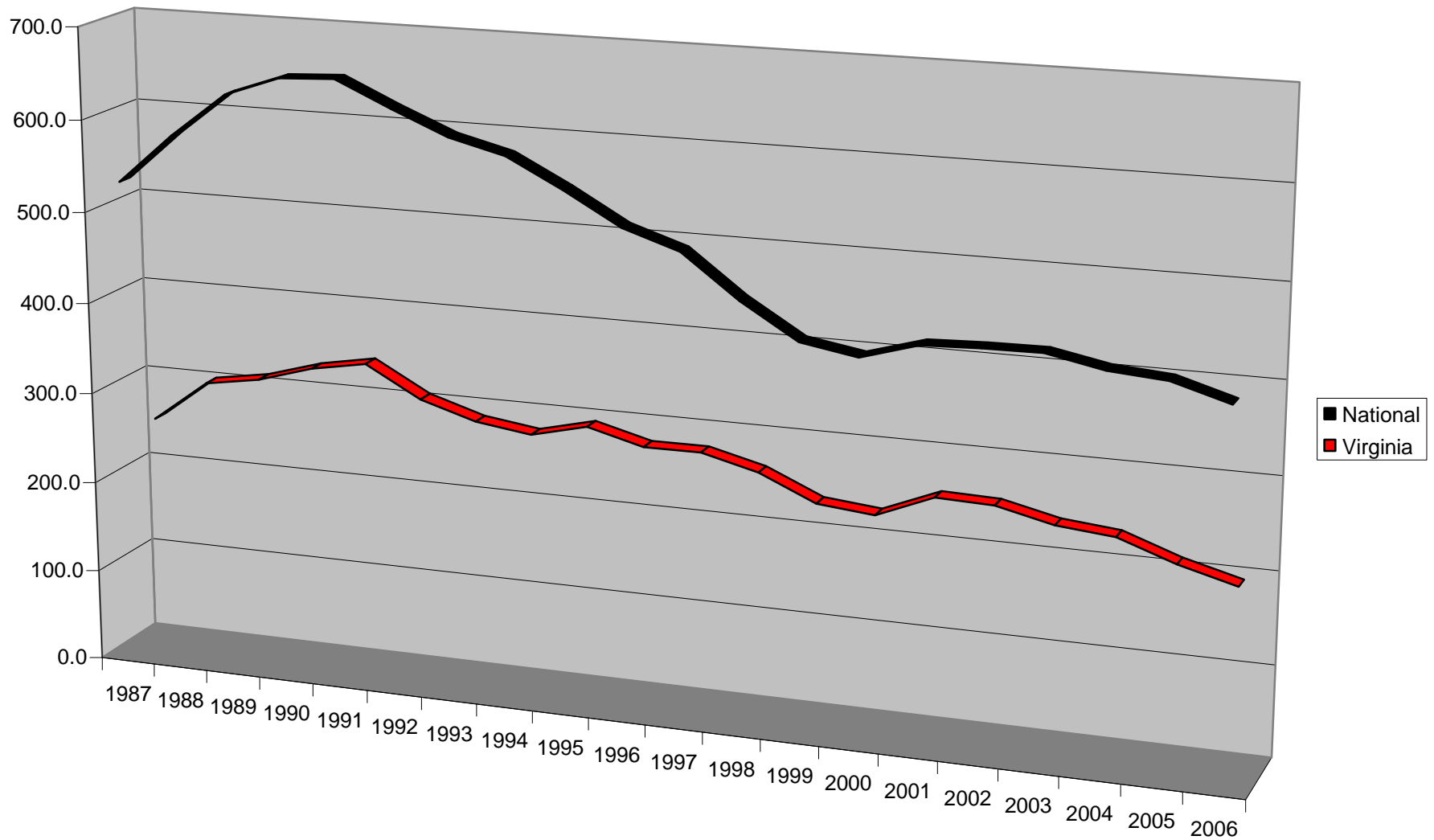
NATIONAL VEHICLE THEFT RATE (Number of Thefts per 100,000 residents)

Year	Population	Vehicle Thefts	Vehicle Theft Rate	% Inc (Dec)	% Inc (Dec) Since 1991
1987	242,288,918	1,288,674	531.9		
1988	244,498,982	1,432,916	586.1	10.19%	
1989	246,819,230	1,564,800	634.0	8.18%	
1990	249,464,396	1,635,907	655.8	3.44%	
1991	252,153,092	1,661,738	659.0	0.50%	
1992	255,029,699	1,610,834	631.6	-4.16%	-4.16%
1993	257,782,608	1,563,060	606.3	-4.00%	-7.99%
1994	260,327,021	1,539,287	591.3	-2.48%	-10.28%
1995	262,803,276	1,472,441	560.3	-5.24%	-14.98%
1996	265,228,572	1,394,238	525.7	-6.18%	-20.23%
1997	267,783,607	1,354,189	505.7	-3.80%	-23.26%
1998	270,248,003	1,242,781	459.9	-9.06%	-30.22%
1999	272,690,813	1,152,075	422.5	-8.13%	-35.89%
2000	281,421,906	1,160,002	412.2	-2.44%	-37.45%
2001	285,317,559	1,228,391	430.5	4.45%	-34.67%
2002	287,973,924	1,246,646	432.9	0.55%	-34.31%
2003	290,788,976	1,261,226	433.7	0.19%	-34.19%
2004	293,656,842	1,237,851	421.5	-2.81%	-36.04%
2005	296,507,061	1,235,859	416.8	-1.12%	-36.75%
2006	299,398,484	1,192,809	398.4	-4.42%	-39.55%

The national Motor Vehicle Theft Rate (number of thefts per 100,000 residents) trends are similar to those in Virginia, although Virginia’s rate has always been less than the national rate and Virginia has enjoyed a larger decrease than has the United States as a whole. In 2006, the Virginia Motor Vehicle Theft rate in Virginia had decreased 42.93% since 1991. This compares to a national decrease of only 39.55%. Note: 2007 national data not available at the time this report prepared.

Source: FBI Uniform Crime Reports

National & Virginia Vehicle Theft Rate



INCIDENCE - VIRGINIA CRIME INDEX OFFENSES

	1987	1988	1989	1990	1991	1992	1993	1994	1995	1996	1997	1998	1999
Murder	437	468	480	545	584	563	539	570	501	496	484	407	346
Forcible Rape ¹	1,537	1,622	1,637	1,915	1,879	2,008	2,084	1,862	1,794	1,763	1,774	1,675	1,566
Robbery	6,244	6,748	6,494	7,626	8,651	8,787	9,216	8,680	8,717	8,145	8,336	7,023	6,165
Agg. Assault	9,196	9,102	10,451	11,621	12,345	12,548	12,322	12,464	12,917	12,236	12,457	12,322	11,578
Burglary	47,642	49,069	46,149	45,236	49,224	45,217	43,338	41,863	39,427	38,868	37,875	36,478	29,780
Larceny	153,690	165,343	172,640	187,564	195,652	185,506	181,104	180,789	181,306	183,243	178,898	165,268	157,758
M.V.Theft	15,022	18,084	18,951	20,263	21,284	19,488	18,533	18,205	19,366	18,454	18,663	17,769	16,120
Total	233,768	250,436	256,802	274,770	289,619	274,117	267,136	264,433	264,028	263,205	258,487	240,942	223,313
Increase/Decrease													
M.V. Theft		20.38%	4.79%	6.92%	5.04%	-8.44%	-4.90%	-1.77%	6.38%	-4.71%	1.13%	-4.79%	-9.28%
Crime Index		7.13%	2.54%	7.00%	5.40%	-5.35%	-2.55%	-1.01%	-0.15%	-0.31%	-1.79%	-6.79%	-7.32%

	2000	2001	2002	2003	2004	2005	2006	2007
Murder	363	355	379	408	392	432	398	411
Forcible Rape	4,437	5,039	5,258	5,205	5,187	1,676	5,475	5,317
Robbery	5,741	6,609	6,865	6,576	6,908	7,486	7,761	7,741
Agg. Assault	9,487	11,345	11,677	11,143	11,312	10,189	11,664	11,125
Burglary	27,154	29,978	30,671	27,997	27,883	29,145	31,529	31,531
Larceny	149,936	169,460	175,997	165,177	157,060	156,038	145,854	148,198
M.V.Theft	16,172	18,257	18,388	17,566	17,309	15,864	14,765	14,087
Total	213,290	241,043	249,235	234,072	226,051	220,830	217,446	218,410
Increase/Decrease								
M.V. Theft	0.32%	12.89%	0.72%	-4.47%	-1.46%	-8.35%	-6.93	-4.59%
Crime Index	-4.49%	13.01%	3.40%	-6.08%	-3.43%	-2.31%	-1.53	0.44%

The Crime Index increased slightly in 2007, with 218,410 reported offenses as compared to the 217,446 offenses in 2006. This was a 0.44% increase, as compared to a 4.59% decrease in Motor Vehicle Thefts.

¹Data for 2000 forward are for Forcible Sex Offenses.

CLEARANCE RATE - VIRGINIA MOTOR VEHICLE THEFT

	1988	1989	1990	1991	1992	1993	1994	1995	1996	1997	1998
Motor Vehicle Theft	31.4%	32.5%	29.6%	27.9%	30.5%	28.9%	29.4%	27.3%	27.8%	24.1%	23.7%
Crime Index	26.6%	27.8%	26.4%	26.2%	27.7%	26.1%	25.6%	25.2%	25.3%	24.2%	24.6%

Clearance Rate information has not been included in *Crime in Virginia* since the 1999 edition. The 2002 edition notes: “This report no longer publishes clearance rates. The IBR system does not accurately reflect the volume of clearances each department produces in a given year. Additionally, the number of arrests in a jurisdiction does not provide offense clearance information in that one person arrested could clear a number of different offenses.”

SEASONALITY - VIRGINIA MOTOR VEHICLE THEFT

Mon	1988	1989	1990	1991	1992	1993	1994	1995	1996	1997	1998
Aug	1,898	1,887	2,084	1,952	1,940	1,975	1,793	1,887	1,839	1,796	1,672
Jul	1,650	1,916	1,925	2,067	1,785	1,669	1,744	1,922	1,820	1,719	1,589
Sep	1,674	1,659	1,784	1,796	1,618	1,757	1,434	1,652	1,639	1,654	1,598
Jun	1,445	1,583	1,586	1,792	1,414	1,556	1,591	1,682	1,554	1,577	1,537
Oct	1,716	1,705	1,885	1,890	1,599	1,648	1,437	1,641	1,670	1,721	1,612
May	1,344	1,507	1,464	1,609	1,652	1,459	1,542	1,507	1,409	1,460	1,459
Jan	1,568	1,581	1,726	1,862	1,631	1,702	1,434	1,520	1,501	1,574	1,487
Nov	1,483	1,570	1,724	1,803	1,723	1,548	1,471	1,409	1,480	1,615	1,408
Mar	1,209	1,418	1,496	1,704	1,490	1,245	1,508	1,649	1,491	1,404	1,367
Apr	1,235	1,284	1,436	1,453	1,411	1,325	1,497	1,435	1,265	1,397	1,422
Dec	1,532	1,573	1,730	1,855	1,728	1,365	1,509	1,565	1,441	1,437	1,406
Feb	1,330	1,268	1,423	1,501	1,497	1,284	1,245	1,497	1,345	1,309	1,212
Tot	18,084	18,951	20,263	21,284	19,488	18,533	18,205	19,366	18,454	18,663	17,769

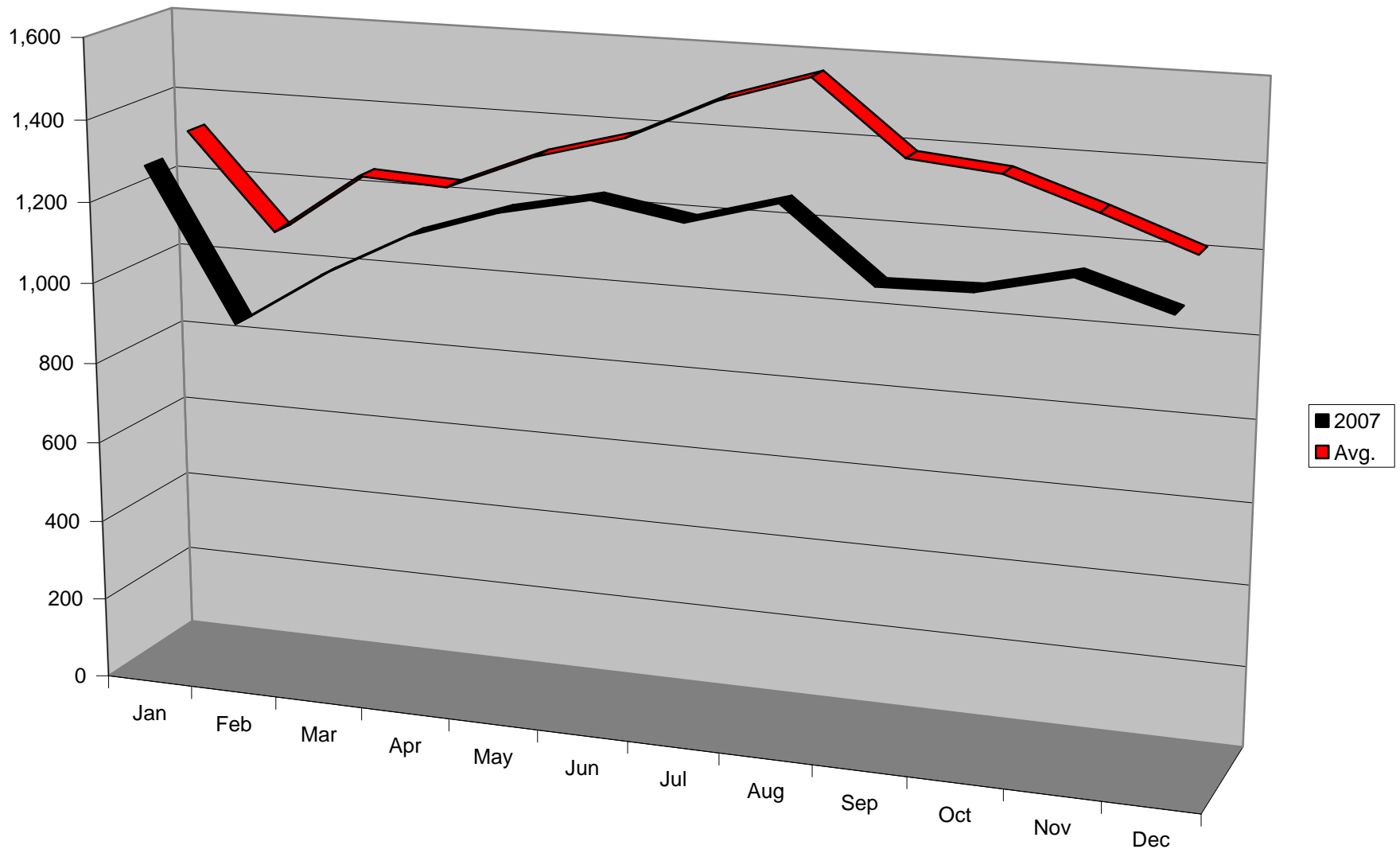
Mon	2000	2001	2002	2003	2004	2005	2006	2007	5 Yr. Avg.	% of Total
Aug	1,596	2,004	1,653	1,734	1,676	1,586	1,495	1,310	1,560	9.80%
Jul	1,439	1,736	1,785	1,705	1,639	1,543	1,317	1,248	1,490	9.36%
Sep	1,326	1,611	1,543	1,500	1,386	1,569	1,338	1,135	1,386	8.70%
Jun	1,360	1,596	1,645	1,417	1,547	1,349	1,331	1,284	1,386	8.70%
Oct	1,343	1,829	1,528	1,494	1,454	1,406	1,333	1,141	1,366	8.58%
May	1,436	1,465	1,621	1,438	1,510	1,265	1,178	1,237	1,326	8.33%
Jan	1,465	1,338	1,548	1,445	1,444	1,239	1,220	1,284	1,326	8.33%
Nov	1,257	1,562	1,415	1,453	1,297	1,275	1,248	1,194	1,293	8.13%
Mar	1,208	1,344	1,505	1,478	1,387	1,182	1,132	1,050	1,246	7.83%
Apr	1,282	1,315	1,580	1,352	1,328	1,201	1,129	1,164	1,235	7.76%
Dec	1,194	1,388	1,376	1,376	1,241	1,249	1,073	1,128	1,213	7.62%
Feb	1,266	1,069	1,189	1,174	1,400	1,000	971	912	1,091	6.86%
Tot	16,172	18,257	18,388	17,566	17,309	15,864	14,765	14,087	15,918	100.00%

In 2007, August was the leading month for Motor Vehicle Theft, with 1,310 thefts (9.30% of the total). January and June had the second highest number of reported thefts in 2007, with 1,284 thefts (9.11% of the total) in each of the two months. July was in fourth place with 1,248 reported thefts (8.86% of the total).

June (fourth), July (tied for second) and August (first) placing among the top months for motor vehicle theft in 2007 mirrors historical findings. These three months occupy the same places when the data for the past five years are averaged. January's place near the top of the list (tied with June for second), however, is an anomaly. January is in seventh place in the five-year average ranking.

Note: 1999 data omitted in order to make comparisons more relevant.

Virginia Motor Vehicle Thefts by Month



AGE OF OFFENDERS - VIRGINIA MOTOR VEHICLE THEFT ARRESTS

Age	1987	1988	1989	1990	1991	1992	1993	1994	1995	1996
12 & under	43	57	65	66	90	77	58	82	63	50
13 - 17	985	1,556	1,733	1,794	1,788	1,687	1,587	1,686	1,547	1,342
18 - 20	519	654	725	644	696	569	511	531	523	506
21 - 24	449	537	540	491	456	448	403	374	367	359
25 - 29	326	389	466	403	389	357	410	413	380	390
30 - 34	178	236	292	255	304	233	290	332	335	338
35 - 39	115	167	154	124	147	173	179	191	182	221
40 & over	131	161	166	125	162	147	145	183	197	208
TOTAL	2,746	3,757	4,141	3,902	4,032	3,691	3,583	3,792	3,594	3,414

Age	1997	1998	1999	2000	2001	2002	2003	2004	2005	2006	2007	Avg.	% of Total
12 & under	41	28	35	13	17	12	10	11	7	10	6	40	1.5%
13 - 17	1,407	1,117	673	485	495	485	383	405	346	251	238	1,047	39.4%
18 - 20	427	445	305	321	316	309	269	273	242	198	191	437	16.4%
21 - 24	248	318	153	193	168	169	193	184	187	164	149	312	11.7%
25 - 29	286	284	180	148	144	148	126	136	154	139	103	275	10.3%
30 - 34	297	321	170	186	161	136	136	126	125	105	84	221	8.3%
35 - 39	212	262	142	146	126	136	114	136	129	114	108	156	5.9%
40 & over	192	238	133	139	151	163	168	174	199	198	165	169	6.4%
TOTAL	3,110	3,013	1,791	1,631	1,578	1,558	1,399	1,445	1,389	1,179	1,044	2,657	100%

Analysis of 2007 Virginia Motor Vehicle Theft Statistics

Age	1987	1988	1989	1990	1991	1992	1993	1994	1995	1996
20 & under	1,547	2,267	2,523	2,504	2,574	2,333	2,156	2,299	2,133	1,898
% of Total	56.3%	60.3%	60.9%	64.2%	63.8%	63.2%	60.2%	60.6%	59.4%	55.6%
21 & over	1,199	1,490	1,618	1,398	1,458	1,358	1,427	1,493	1,460	1,516
% of Total	43.7%	39.7%	39.1%	35.8%	36.2%	36.8%	39.8%	39.4%	40.6%	44.4%
Total	2,746	3,757	4,141	3,902	4,032	3,691	3,583	3,792	3,593	3,414

Age	1997	1998	1999	2000	2001	2002	2003	2004	2005	2006	2007	Total	% of Total
20 & under	1,875	1,590	1,013	819	828	806	662	689	595	459	435	32,005	57.4%
% of Total	60.3%	52.8%	56.6%	50.2%	52.5%	51.7%	47.7%	47.7%	42.8%	38.9%	41.7%	57.4%	
21 & over	1,235	1,423	778	812	750	752	727	756	794	720	609	23,773	42.6%
% of Total	39.7%	47.2%	43.4%	49.8%	47.5%	48.3%	52.3%	52.3%	57.2%	61.1%	58.3%	42.6%	
Total	3,110	3,013	1,791	1,631	1,578	1,558	1,389	1,445	1,389	1,179	1,044	55,778	100.0%

Age	1987	1988	1989	1990	1991	1992	1993	1994	1995	1996
20 & under	1,547	2,267	2,523	2,504	2,574	2,333	2,156	2,299	2,133	1,898
% Inc(Dec)		46.54%	11.29%	-0.75%	2.80%	-9.3%	-7.59%	6.63%	-7.22%	-11.0%
21 & over	1,199	1,490	1,618	1,398	1,458	1,358	1,427	1,493	1,460	1,516
% Inc(Dec)		24.27%	8.59%	-13.60%	4.29%	-6.86%	5.08%	4.63%	-2.21%	3.8%
Total	2,746	3,757	4,141	3,902	4,032	3,691	3,583	3,792	3,593	3,414
% Inc(Dec)		36.82%	10.22%	-5.77%	3.33%	-8.46%	-2.93%	5.83%	-5.25%	-4.98%

Age	1997	1998	1999	20'00	20'01	2002	2003	2004	2005	2006	2007	Total	% of Total
20 & under	1,875	1,590	1,013	819	828	806	662	689	595	459	435	32,005	57.4%
% Inc(Dec)		-1.2%	-15.2%	-36.3%	-19.2%	1.1%	-2.7%	-17.9%	4.1%	-13.6%	-22.9%	-5.2%	
21 & over	1,235	1,423	778	812	750	752	727	756	794	720	609	23,773	42.6%
% Inc(Dec)		-18.5%	15.2%	-45.3%	4.4%	-7.6%	0.3%	-3.3%	4.0%	5.0%	-9.3%	-15.4%	
Total	3,110	3,013	1,791	1,631	1,578	1,558	1,389	1,445	1,389	1,179	1,044	55,778	100.0%
% Inc(Dec)		-8.90%	-3.12%	-40.56%	-8.93%	-3.25%	-1.27%	-10.85%	4.0%	-3.9%	-15.1%	-11.5%	

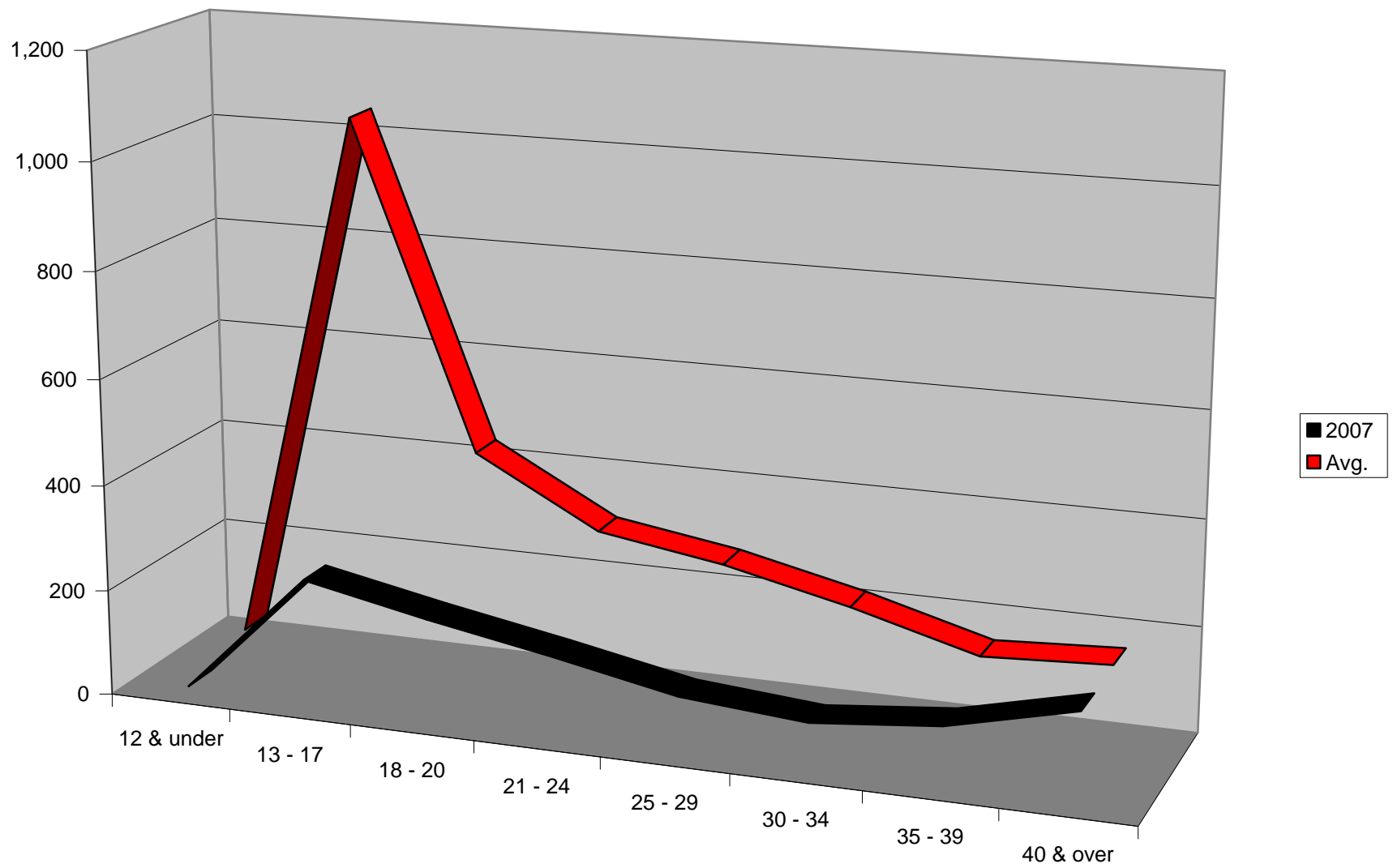
On average (1987-2007), 57.4% of the people arrested for Motor Vehicle Theft in Virginia were 20 years old or younger. (Information for 2007 is reported separately on the next page.)

AGE OF OFFENDERS - VIRGINIA MOTOR VEHICLE THEFT ARRESTS, Continued

Age	2007	% of Total	Cum.
12 & under	6	0.6%	0.6%
13 - 17	238	22.8%	23.4%
18 - 20	191	18.3%	41.7%
21 - 24	149	14.3%	55.9%
25 - 29	103	9.9%	65.8%
30 - 34	84	8.0%	73.9%
35 - 39	108	10.3%	84.2%
40 & over	165	15.8%	100%
TOTAL	1,044	100.0%	

More than 40% (41.7%) of the people arrested for Motor Vehicle Theft in Virginia in 2007 were 20 years old or younger. This is a decrease in the arrest pattern during the 1987 through 2007 period when an average of 57.4% of the arrests were of people 20 years old or younger (see previous page). In fact, arrests of people 20 years old or younger have been less than 53% in nine of the last ten years (1998, 2000, 2001, 2002, 2003, 2004, 2005, 2006 and 2007).

Virginia Arrests for Motor Vehicle Theft by Age



VALUE OF PROPERTY STOLEN - VIRGINIA MOTOR VEHICLE THEFT

1987	1988	1989	1990	1991	1992	1993	1994	1995	1996
\$77,788,249	\$102,675,739	\$111,911,694	\$115,273,346	\$113,933,893	\$106,006,275	\$99,250,780	\$102,689,284	\$127,668,582	\$126,860,726
	31.99%	9.00%	3.00%	-1.16%	-6.96%	-6.37%	3.46%	24.33%	-0.63%

1997	1998	2000	2001	2002	2003	2004	2005	2006	2007
\$127,775,309	\$123,859,005	\$105,422,963	\$109,309,561	\$111,721,528	\$106,689,725	\$105,735,129	\$93,565,797	\$95,337,370	\$96,290,505
0.72%	-3.06%	-14.88%	3.69%	2.21%	-4.50%	-0.89%	-11.51%	1.89%	1.00%
Five Year Average									\$99,523,705

The “Value of Property Stolen – Virginia Motor Vehicle Theft” in 2007 was \$96,290,505, an increase of 1.00% as compared to 2006.

Note: 1999 data omitted in order to make comparisons more relevant.

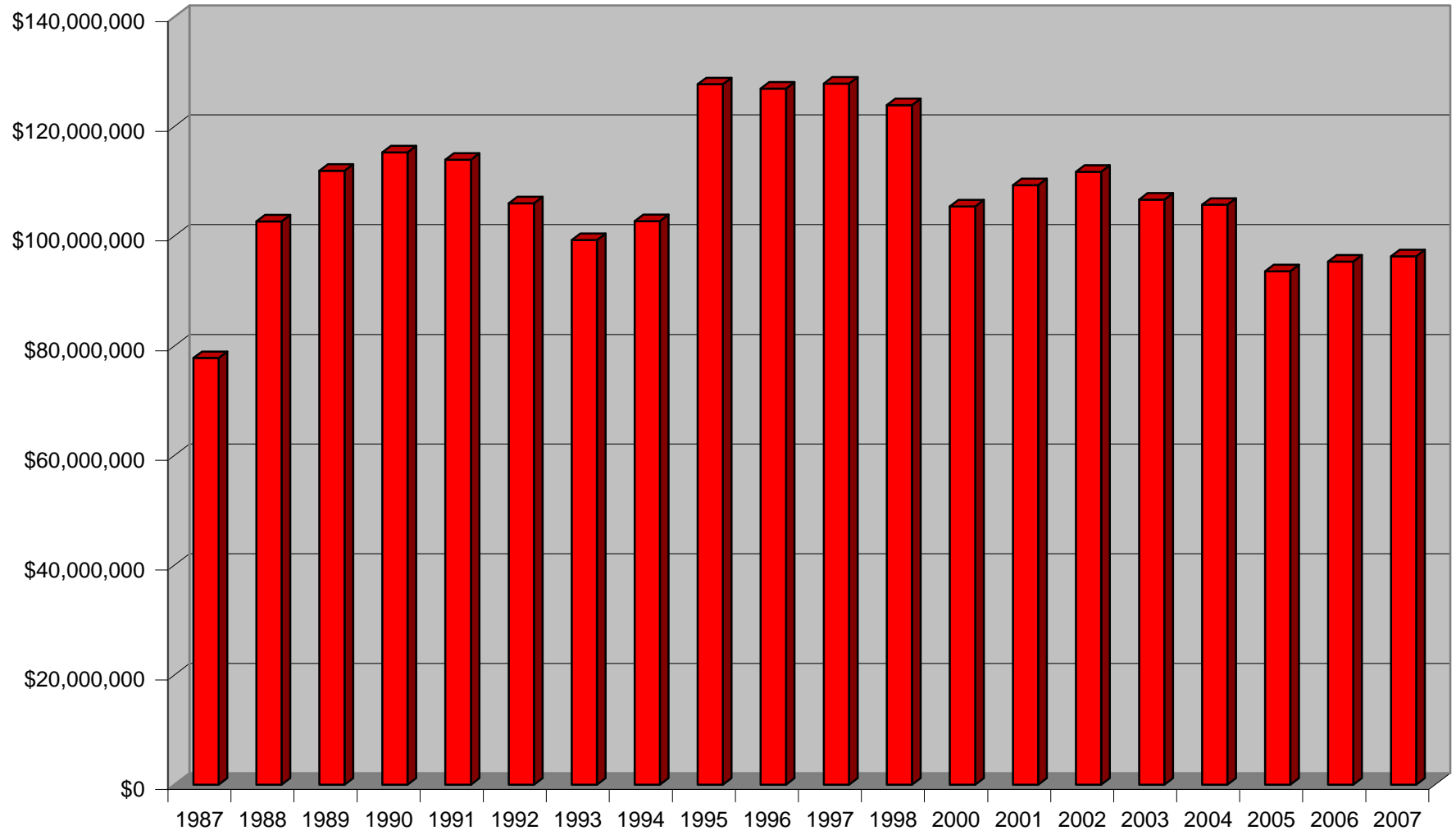
AVERAGE VALUE PER INCIDENT - VIRGINIA MOTOR VEHICLE THEFT

1987	1988	1989	1990	1991	1992	1993	1994	1995	1996
\$5,178	\$5,678	\$5,905	\$5,689	\$5,353	\$5,440	\$5,355	\$5,641	\$6,592	\$6,874
	9.64%	4.01%	-3.67%	-5.90%	1.62%	-1.55%	5.33%	16.87%	4.28%

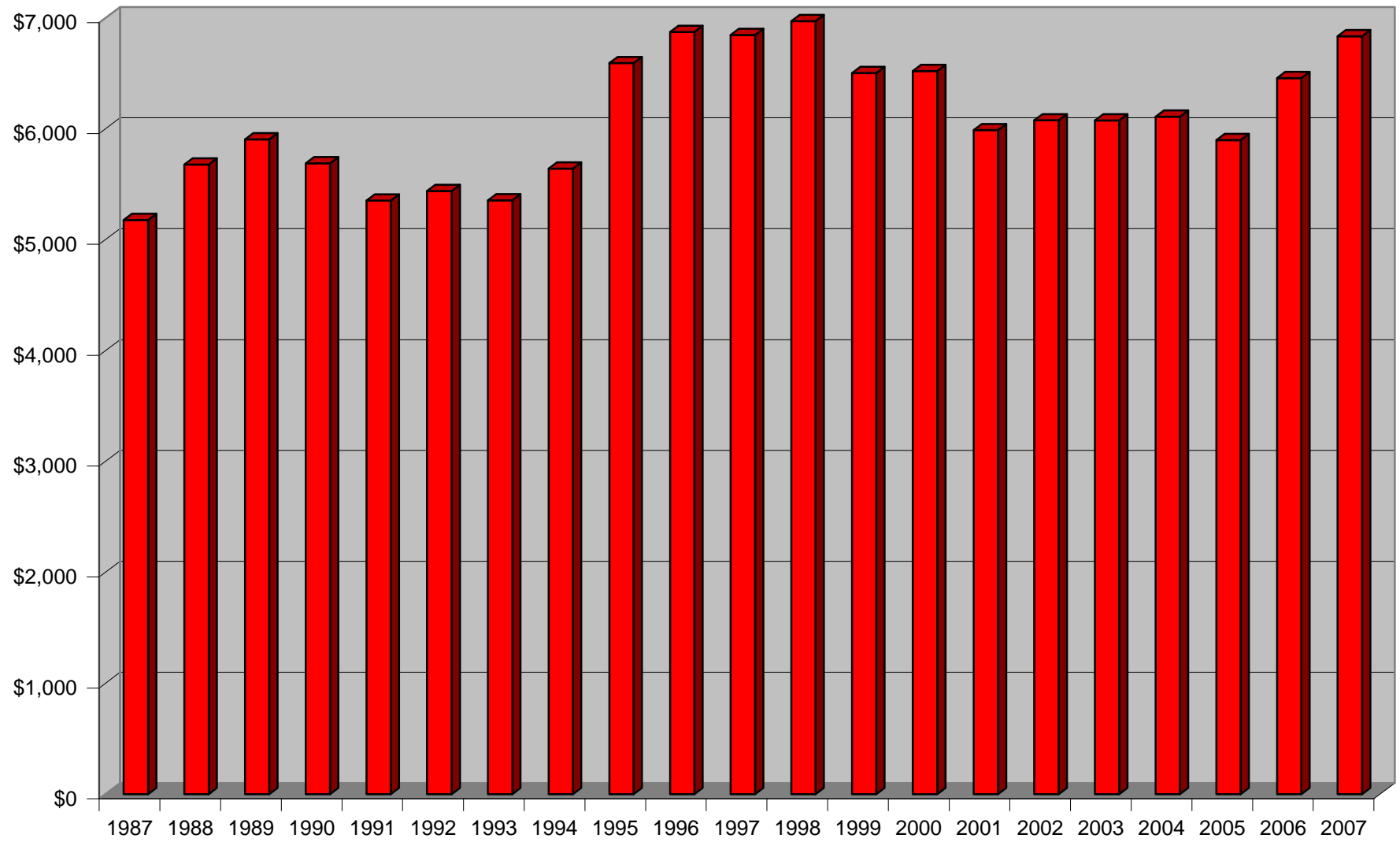
1997	1998	1999	2000	2001	2002	2003	2004	2005	2006	2007
\$6,846	\$6,971	\$6,501	\$6,519	\$5,987	\$6,076	\$6,074	\$6,109	\$5,898	\$6,457	\$6,835
-0.41%	1.81%	-6.74%	0.28%	-8.15%	1.48%	-0.04%	0.58%	-3.45%	9.48%	5.86%
Five Year Average										\$6,275

The average value per incident in 2007 increased from \$6,457 in 2006 to \$6,835 in 2007, a 5.86% increase.

Value of Property Stolen - Virginia Motor Vehicle Theft



Virginia Motor Vehicle Theft - Average Value per Incident



LOCATION (BY TYPE OF JURISDICTION) - VIRGINIA MOTOR VEHICLE THEFT

Location	1987	1988	1989	1990	1991	1992	1993	1994	1995	1996	1997
County	6,917	7,808	7,675	7,123	7,503	6,986	6,760	7,084	7,580	7,965	7,784
City	8,042	10,215	11,226	12,909	13,625	12,356	11,577	10,937	11,626	10,423	10,693
College	60	48	35	77	71	56	49	54	62	29	56
Other	3	13	15	154	85	90	147	130	98	37	130
Totals	15,022	18,084	18,951	20,263	21,284	19,488	18,533	18,205	19,366	18,454	18,663

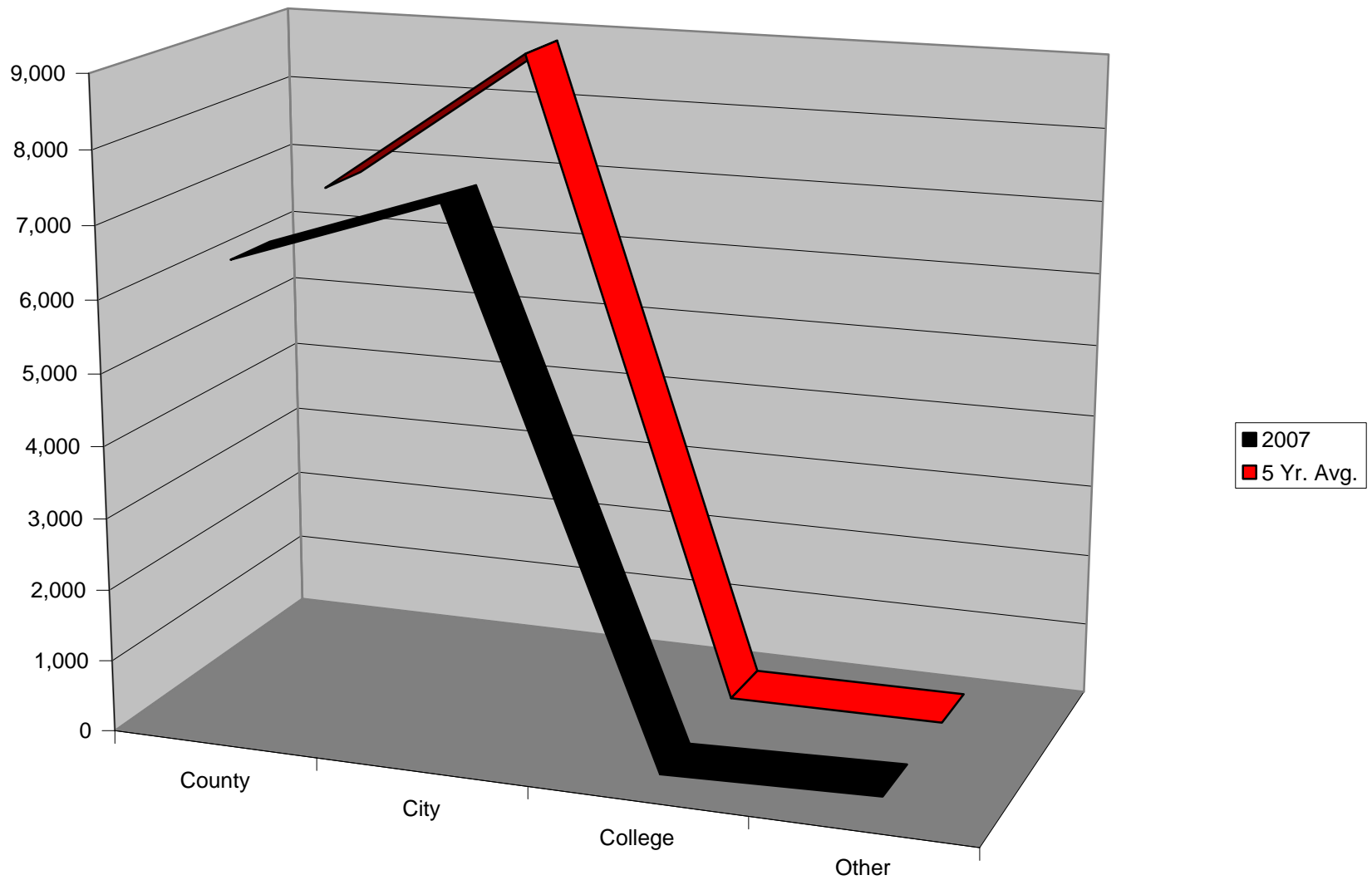
Location	1998	1999	2000	2001	2002	2003	2004	2005	2006	2007	5 yr. Avg.	% of Total
County	7,348	7,025	5,485	6,404	6,983	7,262	7,778	5,939	6,844	6,466	6,858	43.08%
City	10,259	9,110	10,569	11,657	11,259	10,149	9,403	9,741	7,810	7,448	8,910	55.97%
College	37	30	46	64	66	77	110	59	38	38	64	0.40%
Other	125	58	72	132	80	78	18	125	73	135	86	0.54%
Total	17,769	16,223	16,172	18,257	18,388	17,566	17,309	15,864	14,765	14,087	15,918	100.00%

Note: "Average" and "% of Total" figures are based on 1987 through 2007 data. The information is shown as two tables because of the limitation of the page size.

Over 50% of reported Motor Vehicle Thefts in Virginia occur in cities (55.97% for the 2003-2007 five-year average; 52.87% for 2007). Another 40% (43.08% for the 2003-2007 average; 45.90% for 2007) occur in counties (includes towns). The remaining thefts occur in colleges and other locations such as airports. The difference between numbers of thefts in cities and counties (including towns) has been narrowing. In 2001, there were 5,253 more thefts in cities than in counties, a 45% difference. By 2007, the gap was only 982 thefts or 13%.

Note: 1999 thefts by location data were slightly different than total reported thefts (16,120 total vs. 16,223 total when counted by area).

Virginia Motor Vehicle Thefts by Location



LOCATION (BY VSP DIVISION) - VIRGINIA MOTOR VEHICLE THEFT

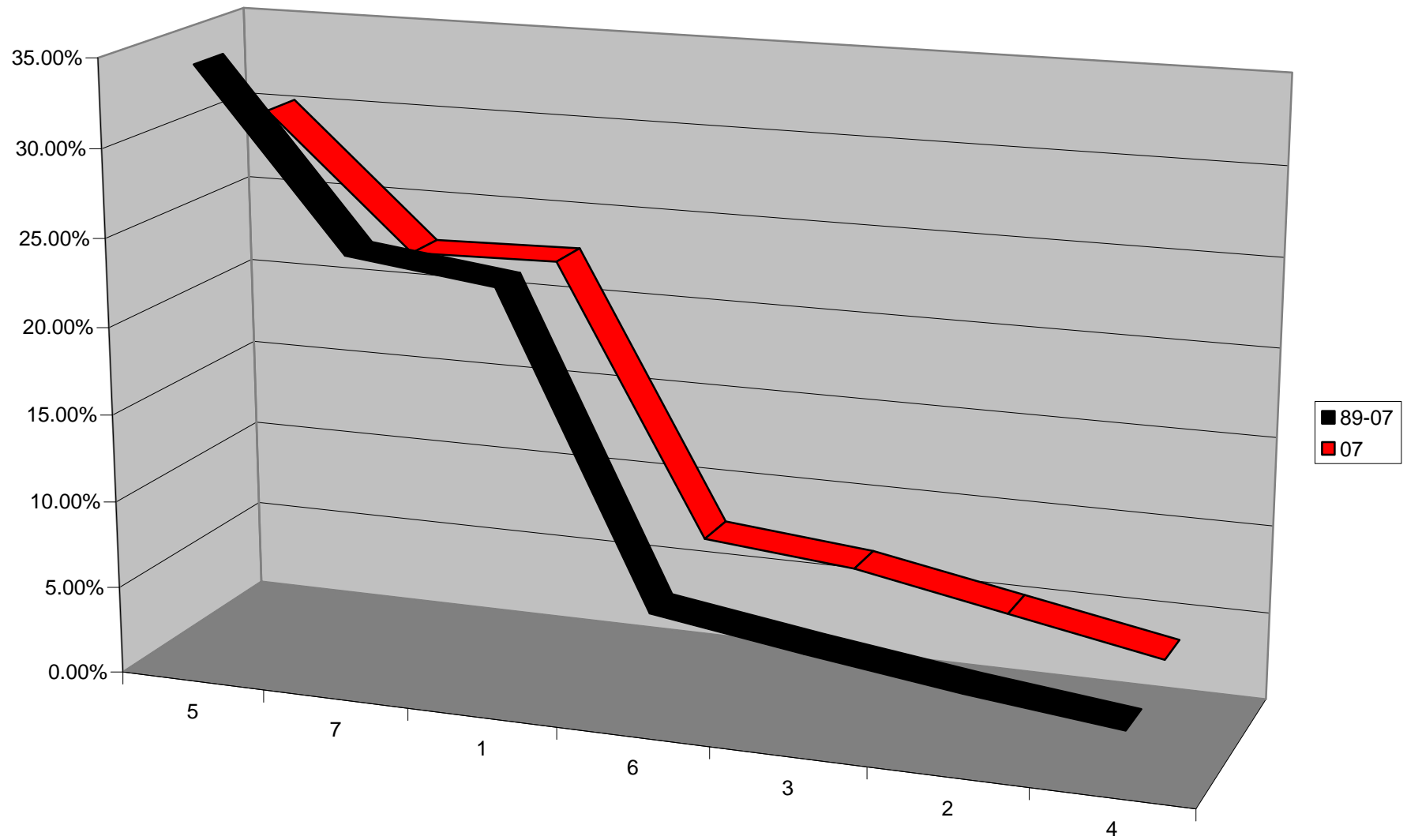
Division	89-07 Thefts	% of Total	Cumulative
5	116,663	34.46%	34.46%
7	82,996	24.52%	58.98%
1	79,517	23.49%	82.47%
6	20,830	6.15%	88.62%
3	16,533	4.88%	93.51%
2	12,627	3.73%	97.24%
4	9,353	2.76%	100.00%
Total	338,519		

Division	2007 Thefts	% of Total	Cumulative
5	4,273	30.33%	30.33%
1	3,234	22.96%	53.29%
7	3,207	22.77%	76.06%
6	1,098	7.79%	83.85%
3	985	6.99%	90.84%
2	758	5.38%	96.22%
4	532	3.78%	100.00%
Total	14,087		

On average (1989-2007), three areas of the state account for over 82% (82.47%) of the reported Motor Vehicle Thefts in Virginia: Tidewater - 35% [34.46%] (Virginia State Police Division 5); Northern Virginia - 25% [24.52%] (Virginia State Police Division 7); and Richmond - 23% [23.49%] (Virginia State Police Division 1).

In 2007, Division 1, with 3,234 reported thefts (22.96% of the total), edged ahead of Division 7 in number of auto thefts. The latter had 3,207 thefts (22.77% of the total).

Thefts by Division (as a % of total thefts)



CHANGE BY DIVISION FROM '04 TO '05 - VIRGINIA MOTOR VEHICLE THEFT

Div.	2006 Thefts	2007 Thefts	Difference	% Change	% of Total Increase/Decrease
1	3,270	3,234	-36	-1.10%	-5.31%
2	766	758	-8	-1.04%	-1.18%
3	991	985	-6	-0.61%	-0.88%
4	684	532	-152	-22.22%	-22.42%
5	4,355	4,273	-82	-1.88%	-12.09%
6	1,214	1,098	-116	-9.56%	-17.11%
7	3,485	3,207	-278	-7.98%	-41.00%
Total	14,765	14,087	-678	-4.59%	

Each of the seven Virginia State Police Divisions posted decreases in Motor Vehicle Theft in 2007. Division 7 (Northern Virginia) led the pack with 278 fewer reported thefts in 2007 than in 2006, a 7.98% decrease. Percentage wise, Division 4 (Southwest Virginia) racked up an impressive 22.22% decrease in thefts representing 152 fewer reported thefts in 2007 than in 2006. Division 6 (Roanoke and surrounding areas) also made an outstanding showing with 116 fewer reported thefts in 2007 than in 2006, a 9.56% decrease.

Note: Additional analysis for each of the seven divisions follows.



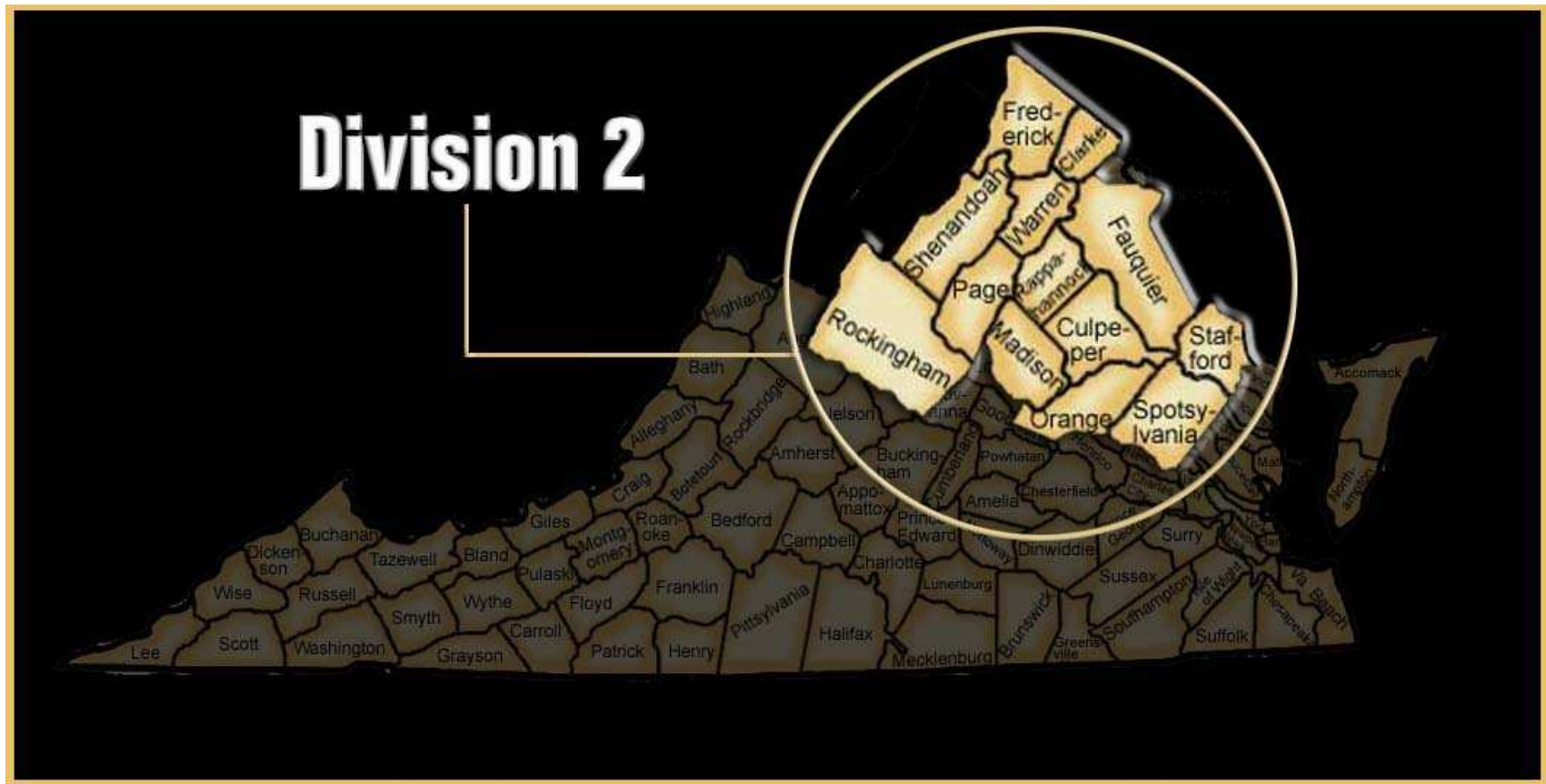
DETAIL BY AREA FOR DIVISION 1 - VIRGINIA MOTOR VEHICLE THEFT

Area	1999 Thefts	2000 Thefts	2001 Thefts	2002 Thefts	2003 Thefts	2004 Thefts	2005 Thefts	2006 Thefts	2007 Thefts	Difference	% Change
Amelia Co.	5	3	11	8	7	14	10	8	18	10	125.00%
Caroline Co. (Bowling Green)	40	28	25	14	24	33	12	15	20	5	33.33%
Charles City Co.	2	1	3	6	3	2	0	5	3	-2	-40.00%
Chesterfield Co.	730	465	467	475	477	515	570	466	519	53	11.37%
Dinwiddie Co. (McKinney)	40	44	31	32	21	58	31	47	52	5	10.64%
Essex Co. (Tappahannock)	19	22	18	17	9	9	18	20	9	-11	-55.00%
Goochland Co.	16	9	15	12	15	24	17	11	19	8	72.73%
Hanover Co. (Ashland)	50	54	53	75	76	85	60	57	60	3	5.26%
Henrico Co.	789	783	879	826	784	839	726	616	571	-45	-7.31%
King & Queen Co.	3	0	0	0	1	0	2	2	6	4	200.00%
King George Co.	20	19	24	35	23	28	18	26	26	0	0.00%
King William Co.	15	12	6	1	2	9	5	6	3	-3	-50.00%
Lancaster Co. (Kilmarnock)	6	4	11	7	9	4	5	1	7	6	600.00%
Louisa Co. (Louisa)	21	19	16	21	9	26	17	25	30	5	20.00%
New Kent Co. (West Point)	12	13	13	28	13	14	22	21	27	6	28.57%
Northumberland Co.	5	6	5	16	13	12	6	6	6	0	0.00%
Nottoway Co. (Blackstone; Crewe; Burkeville)	13	16	20	5	14	27	23	22	28	6	27.27%
Powhatan Co.	5	16	17	18	22	25	24	16	15	-1	-6.25%
Richmond Co. (Warsaw)	6	5	7	8	13	7	6	16	5	-11	-68.75%
Westmoreland Co. (Colonial Beach)	17	26	20	28	30	19	24	18	17	-1	-5.56%
Colonial Heights	41	39	39	45	26	37	45	32	48	16	50.00%
Hopewell	16	105	140	100	77	127	148	125	112	-13	-10.40%
Petersburg	275	299	324	284	221	394	296	218	303	85	38.99%
Richmond	2,101	2,695	3,091	2,548	2,728	2,417	2,249	1,476	1,311	-165	-11.18%
VCU PD	5	11	6	6	11	13	17	10	6	-4	-40.00%
U of R PD	4	1	3	2	4	2	3	0	2	2	
Capitol PD	6	0	2	2	2	4	0	1	0	-1	-100.00%
Dept. Conservation & Recreation	0	0	0	0	0	0	0	0	1	1	
RIC Airport PD	10	9	14	4	12	11	13	4	10	6	150.00%
SS VA Training Center	0	2	4	0	1	0	1	0	0	0	
VA Dept Alc. Bev. Control	1	0	1	0	0	0	0	0	0	0	
TOTAL	4,273	4,706	5,265	4,623	4,647	4,755	4,368	3,270	3,234	-36	-1.10%

There were 36 fewer Motor Vehicle Thefts in Division 1 in 2007 than in 2006, a 1.10% decrease.

The Richmond metropolitan area was a mixed bag in motor vehicle theft increases and decreases in 2007. The City of Richmond had the largest decrease in absolute numbers -- 165 thefts (11.18%). Henrico County had the second largest decrease -- 45 thefts (7.31%). Chesterfield County, on the other hand, had an increase -- 53 thefts (11.37%). The City of Richmond, with 1,311 thefts, still has the highest number of thefts in the state. The second and third highest numbers of reported thefts were in Fairfax County (1,257 thefts) and Norfolk (1,021 thefts).

The Tri-Cities area also had mixed results in 2007. Petersburg posted an increase of 85 thefts (38.99%), while Colonial Heights had 16 more thefts in 2007 than in 2006, a 50% increase. Hopewell, on the other hand, had a decrease of 13 thefts (10.40%).



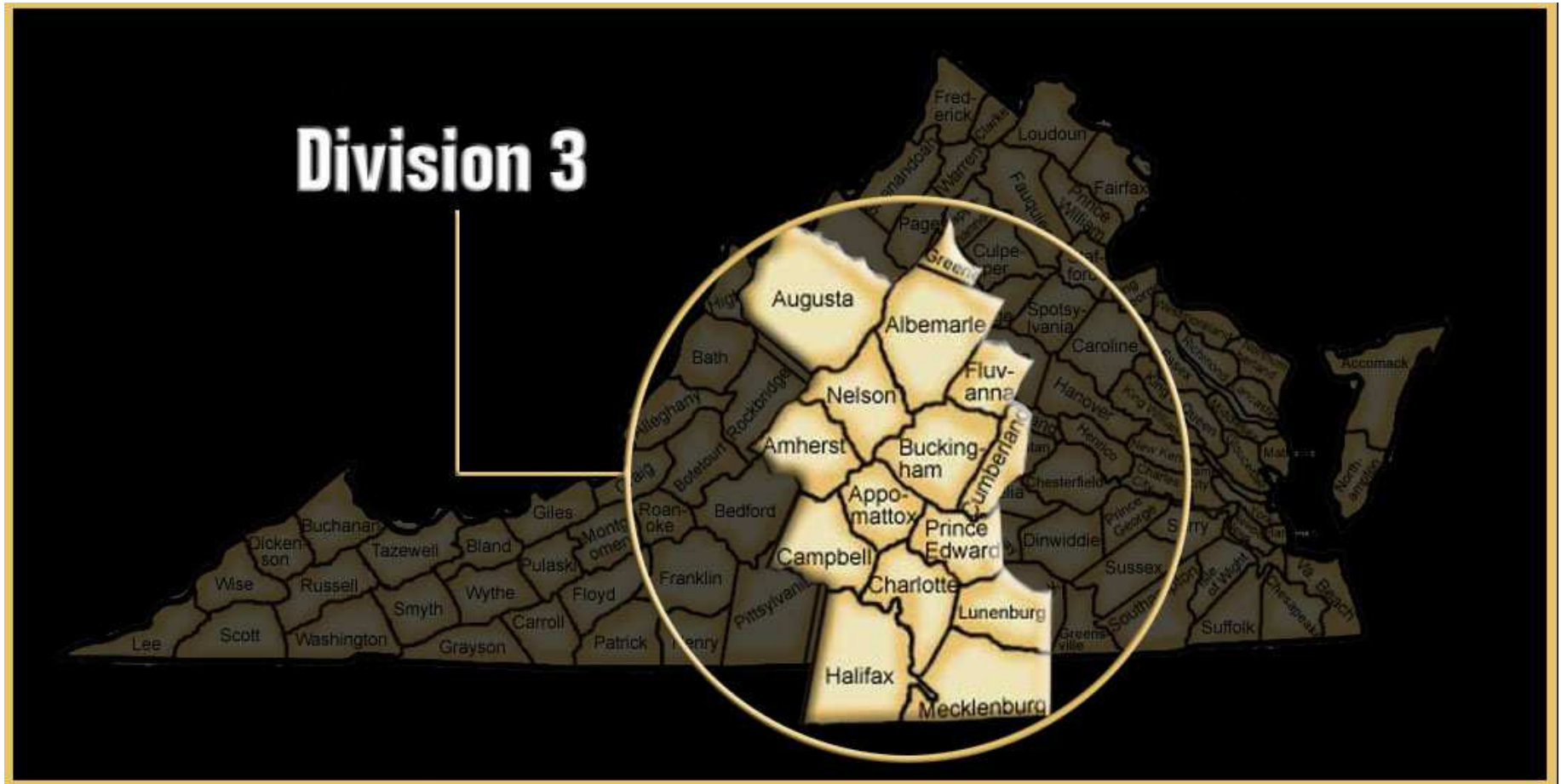
DETAIL BY AREA FOR DIVISION 2 - VIRGINIA MOTOR VEHICLE THEFT

Area	1999 Thefts	2000 Thefts	2001 Thefts	2002 Thefts	2003 Thefts	2004 Thefts	2005 Thefts	2006 Thefts	2007 Thefts	Difference	% Change
Clarke Co. (Berryville)	16	12	17	15	22	18	12	12	23	11	91.67%
Culpeper Co. (Culpeper)	26	0	19	32	30	33	28	33	43	10	30.30%
Fauquier Co. (Warrenton)	55	35	47	53	60	41	41	50	67	17	34.00%
Frederick Co. (Middletown; Stephens City)	96	93	105	92	95	105	110	143	135	-8	-5.59%
Madison Co.	9	8	12	3	1	2	7	11	22	11	100.00%
Orange Co. (Orange; Gordonsville)	20	8	21	31	28	27	16	21	21	0	0.00%
Page Co. (Luray; Shenandoah; Stanley)	20	8	20	23	5	6	23	25	15	-10	-40.00%
Rappahannock Co.	4	5	6	0	0	7	5	4	4	0	0.00%
Shenandoah Co. (Edinburg; Mt. Jackson; Woodstock; Strasburg; New Market)	27	33	24	37	26	25	27	26	27	1	3.85%
Spotsylvania Co.	114	95	96	82	94	84	90	67	75	8	11.94%
Stafford Co.	148	160	117	142	152	109	69	160	130	-30	-18.75%
Warren Co. (Front Royal)	74	68	71	56	56	57	65	62	49	-13	-20.97%
Fredericksburg	31	75	65	86	77	76	64	77	73	-4	-5.19%
Winchester	40	54	57	44	50	59	65	75	74	-1	-1.33%
Univ of Mary Wash PD	1	2	1	0	0	0	0	0	0	0	
TOTAL	744	656	678	696	696	649	622	766	758	-8	-1.04%

Division 2 had 8 fewer auto thefts in 2007 than in 2006, a 1.04% decrease.

The largest decrease in the Division in absolute numbers of thefts occurred in Stafford County (30 thefts; 18.75%), followed by Warren County, including Front Royal (13 thefts, 20.97%), and Page County, including Luray, Shenandoah and Stanley (10 thefts; 40%).

The largest increases were in Fauquier County, including Warrenton (17 thefts, 34%), followed by Clarke County, including Berryville (11 thefts; 91.67%), and Culpeper County, including the Town of Culpeper (10 thefts; 30.30%).

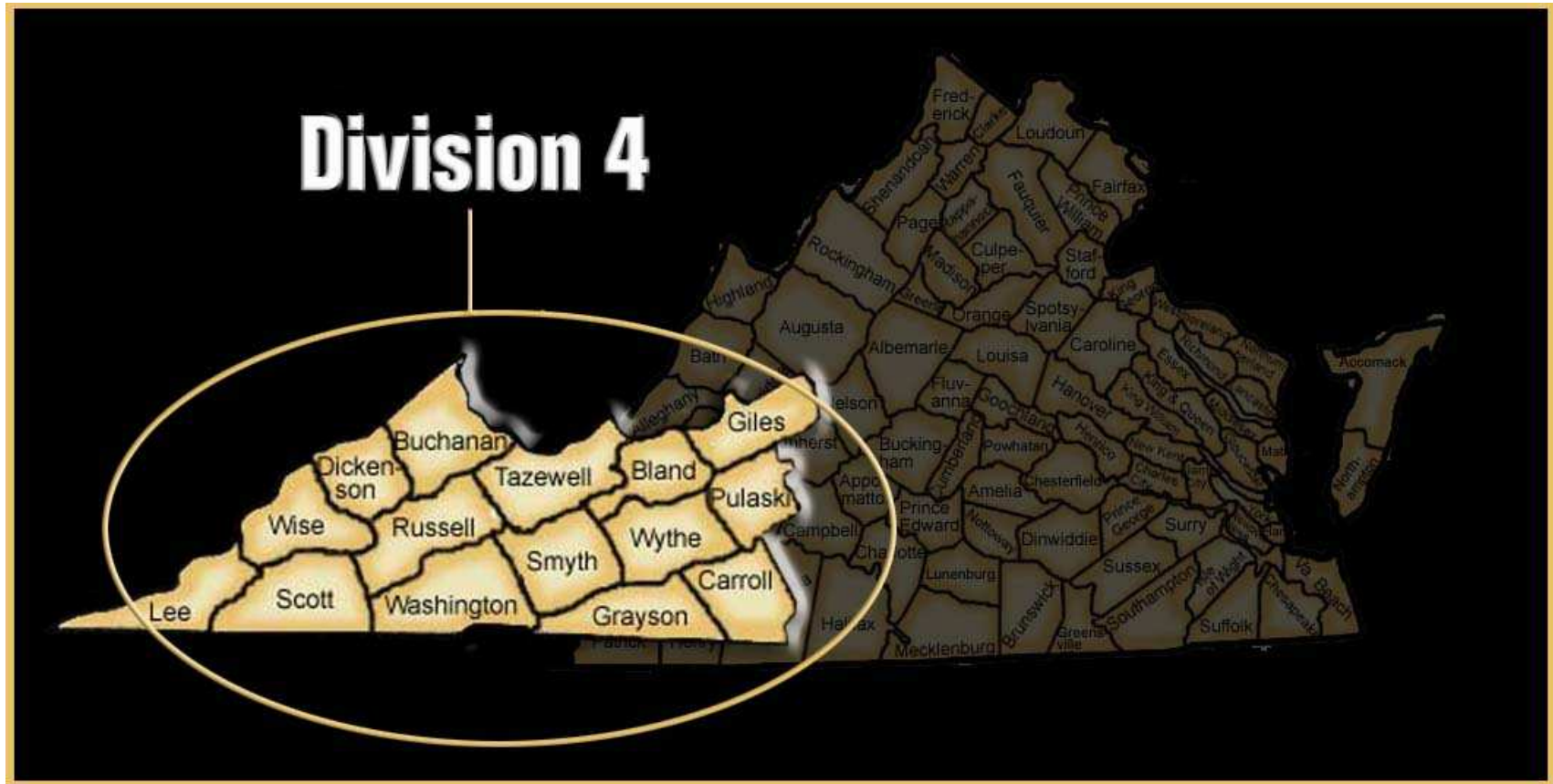


DETAIL BY AREA FOR DIVISION 3 - VIRGINIA MOTOR VEHICLE THEFT

Area	1999 Thefts	2000 Thefts	2001 Thefts	2002 Thefts	2003 Thefts	2004 Thefts	2005 Thefts	2006 Thefts	2007 Thefts	Differ- ence	% Change
Albemarle Co.	66	88	74	86	91	78	117	111	93	-18	-16.22%
Amherst Co. (Amherst)	31	22	43	19	33	31	25	19	29	10	52.63%
Appomattox Co.	9	8	5	2	6	2	11	2	17	15	750.00%
Augusta Co.	65	46	47	51	69	65	40	40	63	23	57.50%
Buckingham Co.	19	9	8	8	3	12	16	13	19	6	46.15%
Campbell Co. (Altavista; Brookneal)	69	72	81	82	40	54	73	54	61	7	12.96%
Charlotte Co.	13	4	11	8	17	3	14	19	18	-1	-5.26%
Cumberland Co.	10	12	7	10	3	5	11	11	12	1	9.09%
Fluvanna Co.	19	12	19	15	15	22	15	14	17	3	21.43%
Greene Co.	2	17	11	12	8	11	10	19	12	-7	-36.84%
Halifax Co. (Halifax; South Boston)	48	30	40	54	30	22	33	43	42	-1	-2.33%
Lunenburg Co. (Kenbridge; Victoria)	7	9	22	14	14	8	11	10	18	8	80.00%
Mecklenburg Co. (Chase City; Clarksville; LaCrosse; South Hill)	60	79	71	41	39	31	43	73	61	-12	-16.44%
Nelson Co.	19	20	25	17	26	18	13	22	29	7	31.82%
Prince Edward Co. (Farmville)	5	2	9	7	8	1	4	3	8	5	166.67%
Rockingham Co. (Bridgewater; Broadway; Dayton; Elkton; Grottoes; Timberville)	31	26	36	43	46	27	22	27	22	-5	-18.52%
Charlottesville	122	149	120	143	129	154	168	187	141	-46	-24.60%
Harrisonburg	101	74	94	73	64	78	46	72	75	3	4.17%
Lynchburg	125	213	220	206	168	176	175	167	172	5	2.99%
Staunton	38	38	43	51	53	26	42	37	32	-5	-13.51%
Waynesboro	29	14	52	36	36	43	40	42	39	-3	-7.14%
UVA PD	3	6	3	9	3	5	3	5	4	-1	-20.00%
Longwood College	0	0	2	0	0	0	0	1		-1	-100.00%
James Madison U PD	1	0	4	0	4	3	3	0	1	1	
TOTAL	935	950	1047	987	905	875	935	991	985	-6	-0.61%

There were 6 fewer Motor Vehicle Thefts in Division 3 in 2007 than in 2006, a 0.61% decrease.

The largest decrease was in Charlottesville (46 thefts; 24.60%), followed by Albemarle County (18 thefts; 16.22%) and Mecklenburg County, including Chase City, Clarksville, LaCrosse and South Hill (12 thefts; 16.44%). The largest increase was in Augusta County (23 thefts; 57.50%), followed by Appomattox County (15 thefts; 750%) and Amherst County, including Amherst (10 thefts; 52.63%).



DETAIL BY AREA FOR DIVISION 4 - VIRGINIA MOTOR VEHICLE THEFT

Area	1999 Thefts	2000 Thefts	2001 Thefts	2002 Thefts	2003 Thefts	2004 Thefts	2005 Thefts	2006 Thefts	2007 Thefts	Differ- ence	% Change
Bland Co.	3	3	2	3	6	4	4	4	3	-1	-25.00%
Buchanan Co. (Grundy)	32	13	30	48	62	52	51	38	44	6	15.79%
Carroll Co. (Hillsville)	35	44	35	26	43	65	52	61	42	-19	-31.15%
Dickenson Co. (Clintwood; Haysi; Clinchco)	5	5	5	4	7	7	5	20	15	-5	-25.00%
Giles Co. (Glen Lyn; Pearisburg; Pembroke; Rich Creek; Narrows)	7	14	4	6	5	1	24	17	19	2	11.76%
Grayson Co. (Fries; Independence)	13	9	7	11	12	17	15	22	18	-4	-18.18%
Lee Co. (Jonesville; Pennington Gap)	21	19	21	27	18	27	20	11	9	-2	-18.18%
Pulaski Co. (Pulaski; Dublin)	46	24	36	34	37	24	36	55	42	-13	-23.64%
Russell Co. (Lebanon; Honaker)	18	20	22	34	32	40	48	42	36	-6	-14.29%
Scott Co. (Gate City; Weber City)	18	12	28	29	29	39	46	47	31	-16	-34.04%
Smyth Co. (Marion; Saltville; Chilhowie)	28	28	41	23	38	39	36	41	34	-7	-17.07%
Tazewell Co. (Bluefield; Pocahontas; Richlands; Tazewell; Cedar Bluff)	61	66	59	64	62	64	63	77	38	-39	-50.65%
Washington Co. (Abingdon; Damascus; Glade Spring)	81	50	49	52	92	80	70	82	73	-9	-10.98%
Wise Co. (Appalachia; Big Stone Gap; Coeburn; Pound; St. Paul; Wise)	62	31	67	53	57	63	60	56	58	2	3.57%
Wythe Co. (Wytheville; Rural Retreat)	30	41	28	19	60	34	38	47	16	-31	-65.96%
Bristol	24	27	38	33	21	32	41	45	37	-8	-17.78%
Galax	20	13	17	13	12	17	14	11	15	4	36.36%
Norton	12	10	5	15	9	8	9	8	2	-6	-75.00%
Univ of VA at Wise							2	0	0	0	
TOTAL	521	429	494	494	602	613	634	684	532	-152	-22.22%

There were 152 fewer thefts in Division 4 in 2007 than in 2006 a 22.22% decrease. This is the largest percentage decrease of any of the Divisions in 2007.

Tazewell County, including Bluefield, Pocahontas, Richlands, Tazewell, and Cedar Bluff, had the largest decrease (39 thefts; 50.65%), followed by Wythe County, including Wytheville and Rural Retreat (31 thefts; 65.96%). Substantial decreases also were posted by Carroll County, including Hillsville (19 thefts; 31.15%) and Pulaski County, including Pulaski and Dublin (13 thefts; 23.64%).



DETAIL BY AREA FOR DIVISION 5 - VIRGINIA MOTOR VEHICLE THEFT

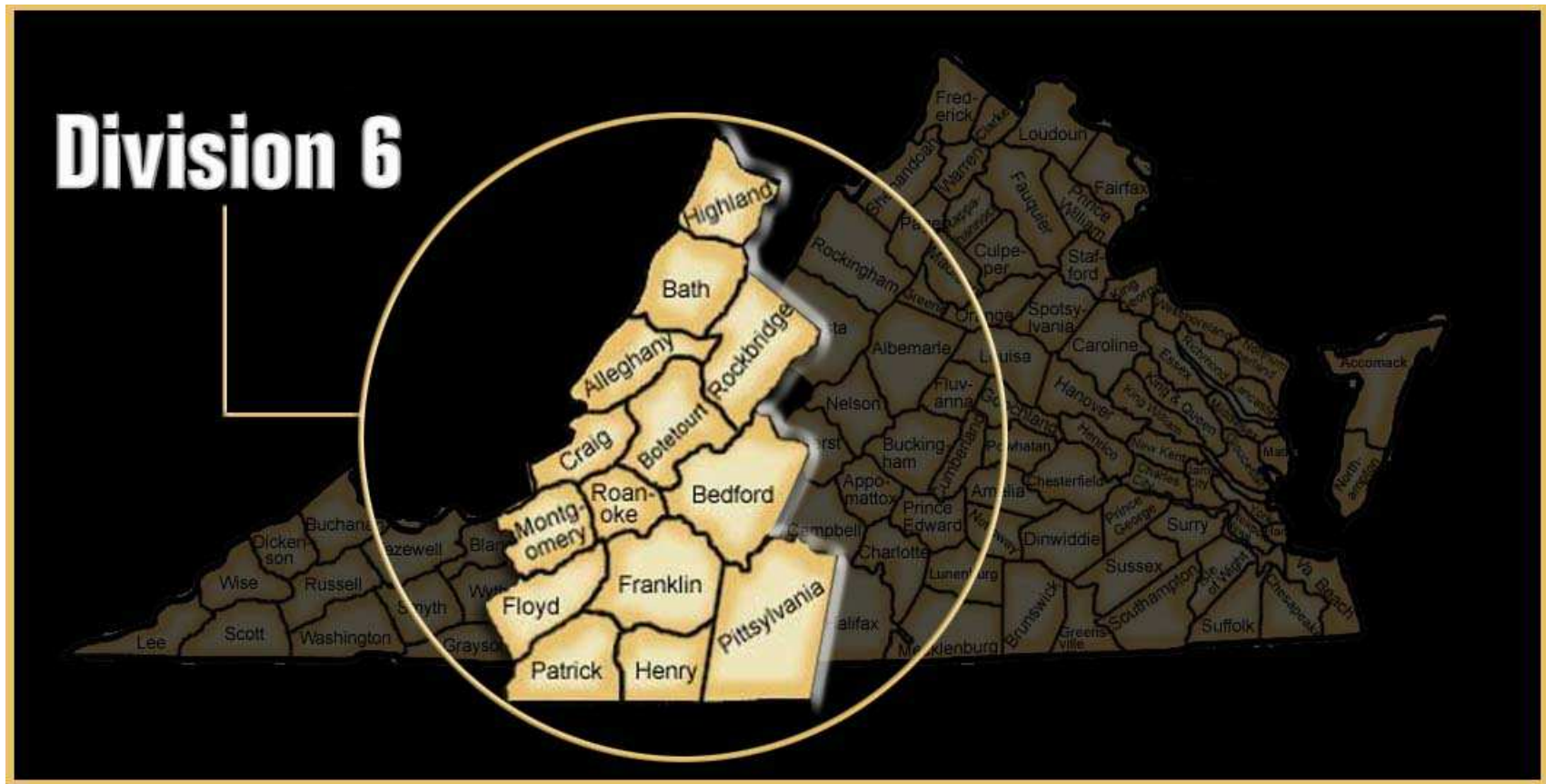
Area	1999 Thefts	2000 Thefts	2001 Thefts	2002 Thefts	2003 Thefts	2004 Thefts	2005 Thefts	2006 Thefts	2007 Thefts	Differ- ence	% Change
Accomack Co. (Chincoteague; Onancock; Parksley; Onley)	83	84	70	54	58	49	60	68	71	3	4.41%
Brunswick Co. (Lawrenceville)	7	13	10	8	14	30	22	18	20	2	11.11%
Gloucester Co.	57	38	20	7	24	16	22	26	25	-1	-3.85%
Greensville Co.	9	11	10	6	17	18	13	18	16	-2	-11.11%
Isle of Wight Co. (Smithfield)	61	42	61	58	41	37	68	52	79	27	51.92%
James City Co.	64	50	60	78	79	54	54	58	49	-9	-15.52%
Mathews Co.	5	5	6	3	9	6	6	8	8	0	0.00%
Middlesex Co.	12	6	7	4	4	7	11	11	9	-2	-18.18%
Northampton Co. (Cape Charles; Exmore)	21	14	19	18	8	16	6	8	23	15	187.50%
Prince George Co.	41	24	36	40	19	36	33	37	47	10	27.03%
Southampton Co. (Courtland; Boykins)	23	33	26	33	23	24	26	22	10	-12	-54.55%
Surry Co.	2	2	5	1	1	3	1	2	4	2	100.00%
Sussex Co. (Waverly)	18	12	18	17	11	14	28	27	12	-15	-55.56%
York Co.	85	75	45	44	44	40	53	33	44	11	33.33%
Chesapeake	580	207	0	630	535	633	536	464	496	32	6.90%
Emporia	34	38	42	30	16	13	16	18	15	-3	-16.67%
Franklin	22	15	30	26	26	26	20	19	33	14	73.68%
Hampton	464	630	1,108	880	566	567	578	524	520	-4	-0.76%
Newport News	1,193	1,256	1,227	1,299	984	962	869	780	690	-90	-11.54%
Norfolk	782	1,742	1,522	1,630	1,440	1,218	1,143	1,024	1,021	-3	-0.29%
Poquoson	5	5	7	6	6	10	9	4	10	6	150.00%
Portsmouth	610	770	680	649	504	588	418	355	318	-37	-10.42%
Suffolk	188	286	152	182	156	143	121	148	126	-22	-14.86%
Virginia Beach	719	870	955	864	814	773	772	601	590	-11	-1.83%
Williamsburg	30	16	24	18	13	22	24	14	20	6	42.86%
Christopher Newport University PD	0	0	0	2	0	0	0	3	2	-1	-33.33%
Hampton University PD	1	2	2	4	0	3	3	1	1	0	0.00%
Norfolk State University PD	0	9	20	16	14	9	6	4	6	2	50.00%
Thomas Nelson Community College	0	0	2	0	2	0	0	0	0	0	
Virginia State University PD	6	2	3	2	3	1	1	7	3	-4	-57.14%
William & Mary College PD	0	1	0	4	0	0	3	0	2	2	
Old Dominion Campus PD	4	0	8	3	5	3	6	1	3	2	200.00%

Area	1999 Thefts	2000 Thefts	2001 Thefts	2002 Thefts	2003 Thefts	2004 Thefts	2005 Thefts	2006 Thefts	2007 Thefts	Difference	% Change
Norfolk Airport Authority	4	2	4	3	2	3	0	0	0	0	
TOTAL	5,510	6,260	6,179	6,619	5,438	5,324	4,928	4,355	4,273	-82	-1.88%

There were 82 fewer reported Motor Vehicle Thefts in Division 5 in 2007 than in 2006, a 1.88% decrease.

The largest decreases in absolute numbers of thefts were posted by Newport News (90 thefts; 11.54%), Portsmouth (37 thefts; 10.42%), and Suffolk (22 thefts; 14.86%).

The largest increases were in Chesapeake (32 thefts 6.90%), Isle of Wight County, including Smithfield (27 thefts; 51.92%), Northampton County, including Cape Charles and Exmore (15 thefts; 187.50%), and Franklin (14 thefts; 73.68%).



DETAIL BY AREA FOR DIVISION 6 - VIRGINIA MOTOR VEHICLE THEFT

Area	1999 Thefts	2000 Thefts	2001 Thefts	2002 Thefts	2003 Thefts	2004 Thefts	2005 Thefts	2006 Thefts	2007 Thefts	Difference	% Change
Alleghany Co. (Iron Gate)	10	9	9	16	14	9	6	8	6	-2	-25.00%
Bath Co.	2	0	1	1	0	0	0	2	1	-1	-50.00%
Bedford Co.	27	20	35	62	45	35	36	35	45	10	28.57%
Botetourt Co.	22	29	27	27	21	19	27	22	16	-6	-27.27%
Craig Co.	3	2	3	1	0	2	3	2	1	-1	-50.00%
Floyd Co.	9	10	13	16	16	20	11	19	14	-5	-26.32%
Franklin Co. (Rocky Mount)	44	51	55	35	57	75	54	59	53	-6	-10.17%
Henry Co.	147	152	133	109	115	111	87	77	113	36	46.75%
Highland Co.	1	2	2	0	0	1	0	0	1	1	
Montgomery Co. (Blacksburg; Christiansburg)	90	85	96	64	93	87	95	107	83	-24	-22.43%
Patrick Co.	24	68	58	62	37	30	41	50	51	1	2.00%
Pittsylvania Co. (Chatham; Gretna; Hurt)	54	96	87	44	77	72	57	73	57	-16	-21.92%
Roanoke Co. (Vinton)	66	74	94	100	117	113	84	71	48	-23	-32.39%
Rockbridge Co. (Glasgow)	19	29	9	5	4	12	9	13	17	4	30.77%
Bedford	12	9	6	6	8	5	3	9	10	1	11.11%
Buena Vista	2	6	1	4	2	6	2	2	2	0	0.00%
Clifton Forge	3	2	3	5	4	5	2	0	1	1	
Covington	0	2	8	19	18	11	6	10	9	-1	-10.00%
Danville	141	33	133	103	134	119	113	112	111	-1	-0.89%
Lexington	5	3	4	2	3	8	6	2	4	2	100.00%
Martinsville	50	47	64	29	28	25	25	36	36	0	0.00%
Radford	13	0	0	0	0	0	32	28	22	-6	-21.43%
Roanoke	286	261	337	199	333	500	451	443	354	-89	-20.09%
Salem	43	35	35	39	37	43	37	32	39	7	21.88%
Ferrum College PD	0	1	1	0	1	0	0	0	0	0	
Radford Univ PD	0	3	2	1	3	1	0	0	0	0	
Virginia Tech PD	1	0	0	0	0	0	4	2	2	0	0.00%
VMI PD	1	0	0	0	0	0	0	0	2	2	
TOTAL	1,054	1,029	1,216	949	1,167	1,309	1,191	1,214	1,098	-116	-9.56%

There were 116 fewer Motor Vehicle Thefts in Division 6 in 2007 than in 2006, a 9.56% decrease.

Analysis of 2007 Virginia Motor Vehicle Theft Statistics

Page 42

The Roanoke area was a major contributor to the decrease in thefts in Division 6. The City of Roanoke had 89 fewer thefts (20.09% decrease), while Roanoke County, including Vinton, had 23 fewer thefts (32.39% decrease).

The largest increase in Division 6 was in Henry County (36 thefts; 46.75% increase).



DETAIL BY AREA FOR DIVISION 7 - VIRGINIA MOTOR VEHICLE THEFT

Area	1999 Thefts	2000 Thefts	2001 Thefts	2002 Thefts	2003 Thefts	2004 Thefts	2005 Thefts	2006 Thefts	2007 Thefts	Difference	% Change
Arlington Co.	665	309	702	676	599	493	419	357	302	-55	-15.41%
Fairfax Co. (Herndon; Vienna)	1,230	311	527	1,353	1,502	1,415	1,137	1,482	1,284	-198	-13.36%
Loudoun Co. (Leesburg; Middleburg; Purcellville)	203	229	243	220	243	212	259	266	255	-11	-4.14%
Prince William Co. (Quantico; Dumfries; Occoquan; Haymarket)	565	695	778	721	828	895	677	695	651	-44	-6.33%
Alexandria	706	293	702	736	621	475	399	389	378	-11	-2.83%
Fairfax	62	49	40	0	7	0	0	30	40	10	33.33%
Falls Church	36	0	71	52	45	42	37	26	26	0	0.00%
Manassas	119	154	151	130	136	141	124	123	106	-17	-13.82%
Manassas Park	30	35	50	44	42	41	15	45	37	-8	-17.78%
George Mason U PD	3	7	6	13	20	6	7	2	4	2	100.00%
NOVA Comm Clg PD	0	1	1	4	7	2	1	2	0	-2	-100.00%
Metro Wash Airport Authority	37	59	107	71	61	62	111	68	124	56	82.35%
TOTAL	4,634	2,142	3,378	4,020	4,111	3,784	3,186	3,485	3,207	-278	-7.98%

There were 278 fewer reported Motor Vehicle Thefts in Division 7 in 2007 than in 2006, a 7.98% decrease. This was the largest decrease in absolute numbers of all of the Divisions.

Fairfax County, including Herndon and Vienna, had the largest decrease (198 thefts; 13.36%), followed by Arlington County (55 thefts; 15.41%).

The Metropolitan Washington Airport Authority had the largest increase (56 thefts; 82.35%).